

PDR- PIONEERS OF FOCUSED IR TECHNOLOGY

BGA/SMD Rework Station

PDR designs, manufactures, and distributes IR Rework Stations, Industrial X-Ray Inspections Systems, and IR Thermal Test equipment for the electronics component and PCB assembly industry.

At the forefront of SMD rework technologies, PDR are working with many of the world's top names in:

- Electronic Manufacturing
- Defence
- Medical
- Automotive
- Research & Development



PDR IR-A3

SEMI-AUTOMATIC ASSISTED REWORK

- Advanced Focused IR component heating
- Automatic Component Removal and Placement
- Quartz IR PCB preheating with 3 zones
- 2" Split Beam prism system for simultaneous PCB/component viewing
- Precision Components Pick and Placement up to 5um
- Precision PCB handling
- Component Nest/Flux Application Facility
- Closed Loop Non-Contact Temperature Sensing
- Advanced Automatic Thermal Process Control
- Reflow Process Observation Camera
- PCB Forced Air Cooling

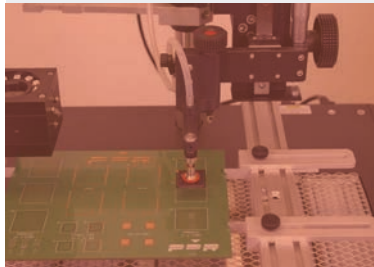
FOCUSED INFRARED

What you see you heat.
No collateral damage.
Instantaneous control.



PLACEMENT TECHNOLOGY

Our placement technology allows every operator to achieve the same standard of quality.



INTELLIGENT SOFTWARE

One profile to rework nearly all applications.

