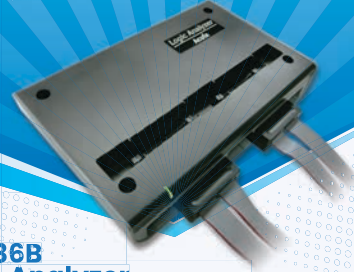


MSO3124V Mixed Signal Oscilloscope

MSO3000 Mixed Signal Oscilloscope

- DSO: 4 Channels, 1 GS/s S/R, 200 MHz bandwidth
- Logic / Protocol Analyzer: 16 Channels, 2 GS/s Timing Analysis, 250 MHz State Analysis
- Data Logger (HDD / SSD Storage)
- Total Memory: 4 Gb
- Digital Voltmeter: 3 digits
- Frequency Counter: 5 digits

6-in-1 Instruments: DAQ, DSO, DVM, Frequency Counter, Logic Analyzer, Protocol Analyzer



LA4136B Logic Analyzer

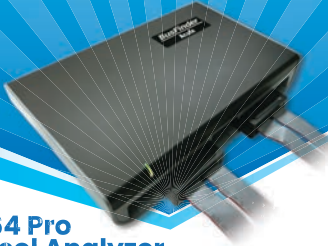
LA4000 Logic Analyzer

- 136 channels
- 4GHz Timing Analysis / 400MHz State Analysis
- 32Gb Memory

- Logic, State and Protocol triggers
- Stackable with a DSO to form an MSO

*TravelBus, TravelLogic

Ideal for applications requiring high-speed timing analysis or dealing with complex state analysis



BF7264 Pro Protocol Analyzer

BusFinder Protocol Analyzer

- Real-time data display, post-capture waveform
- Trigger for commands or data
- 64 channels Logic Analyzer
- 32Gb total memory Protocol Analyzer
- Protocol Option: eDP1.4a, eMMC 5.1, MIPI D-PHY 1.2, NAND Flash, SD 3.0 (SDIO 3.0), SD 4.1 (UHS-II), SGMII, UFS2.1



TS3124V DSO

TravelScope DSO

- Record length: 128Mpts/ch
- Channel: 4
- Sample rate: 1 GS/s
- Bandwidth: 200 MHz
- Data Logger (HDD / SSD Storage)
- Digital Voltmeter: 3 digits
- Frequency Counter: 5 digits

PROTOCOL ANALYZER

BiSS-C	CAN2.0B/CAN FD	I2S	LIN2.2
DALI	DP_Aux	MDIO	MII
eSPI	HID over I2C	MIPI I3C 1.1	MIPI RFFE 3
I2C		Modbus	

PMBus	Profibus
PWM	RGMII
RMII	RS-232
RS-482	

SMBus	SPI
SVID	UART (RS232)
USB PD 3	USB1.1

ETHERNET

10BASE-T1S, MII/RMII/RGMII/GMII/SGMII